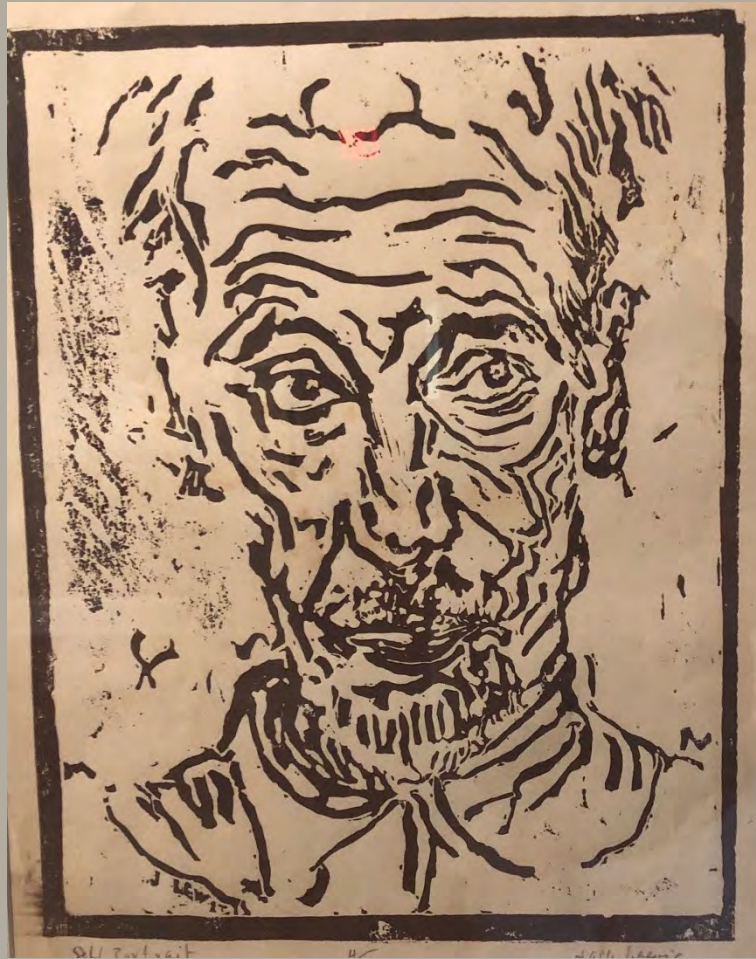


Jack Lewis: Delaware's Hidden Gem

ROAD TRIP



Jack Lewis
Self Portrait, n.d.
Linoleum block print
On loan from an
anonymous collector

Jack Lewis Road Trip:
Eastern Shore of Maryland

Biggs Museum of American Art Driving Tours

Jack Lewis Road Trip: Eastern Shore of Maryland

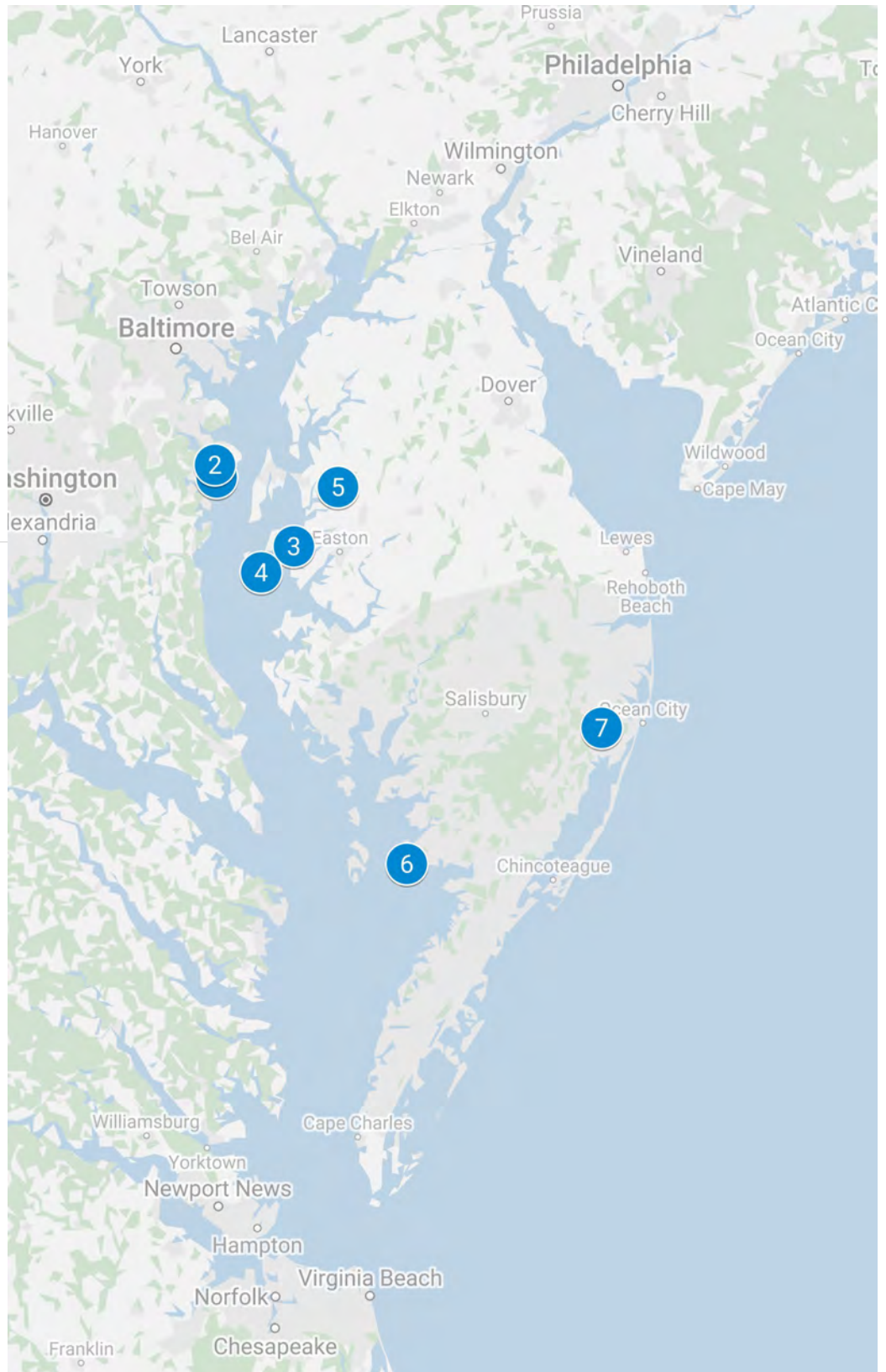
- 1 Port of Annapolis
- 2 Anne Catherine Green Park
- 3 North Talbot Street
- 4

Knapps Narrows-Tighlman Island

- 5 Wye Oak
- 6 Rr Norris Drive
- 7

South Main Street & Jefferson Street

Travel with the Biggs to discover new art and places artistic inspiration all around us.





Jack Lewis
Annapolis Quai, July 1
 1972
 Watercolor, ink on paper
 On loan from an
 anonymous collector



Directions:
 The modern Port of
 Annapolis is in the same
 location that has been
 used for hundreds of
 years. This colonial city
 has been a
 centerpiece of
 Chesapeake law and
 commerce since its early
 history in the 1640s! The
 Port can be found at
 7074 Bembe Beach Road
 in Annapolis.



Jack Lewis
Annapolis, 1964
Watercolor, gouache on paper
On loan from an anonymous lender



Directions:
Jack Lewis may have captured a view of Annapolis across the Severn River from the pier at the Jonas and Anne Catherine Green Park at 2001 Baltimore Annapolis Boulevard.



Jack Lewis
St. Michaels, 1960
 Watercolor on paper
 On loan from an
 anonymous collector



Directions:
 The view that Jack Lewis captured 60 years ago may be a side street off the main thoroughfare of North Talbot Street in St. Michael's, Maryland. This colonial port town on the Chesapeake is still rather small and is likely one of perhaps a dozen streets that intersect Talbot.



Jack Lewis
*Knapps Narrows-
Tighlman Island, 1970*
Watercolor on paper
On loan from an
anonymous collector



Directions:
Of the many sites
captured within the
artwork of Jack Lewis, this
may be one of the most
difficult to get to.
Tilghman Island is on the
edge of a peninsula in the
center of the Chesapeake

and is accessible by a single bridge. The Knapps Narrows
Marina and Inn, which has likely not changed much since
the artist depicted it fifty years ago, is located at 6176
Tilghman Island Road.



Jack Lewis
Wye Oak, 1954
Watercolor, gouache on
paper
On loan from an
anonymous collector



Directions:
Of the sites Lewis
painted in this
exhibition, few have
changed so much as the
Wye Oak. Known as
the largest white oak
tree in the United States
until it came down in

2002, the stump is now the centerpiece of a state park at
14214 Old Wye Mills Road in Wye Mills Maryland.



Jack Lewis
Crisfield Maryland,
1992

Watercolor on paper
On loan from an
anonymous collector



Directions:

This may a be a view
of one portion of the
marina in Somers
Cove, perhaps off of
R.R. Norris Drive, in
downtown
Crisfield.



Jack Lewis
Berlin, 1990
Watercolor on paper
On loan from an
anonymous collector



Directions:
We think the artist's
view from 30 years
ago is near the
intersection of South
Main and Jefferson
Streets in downtown
Berlin.

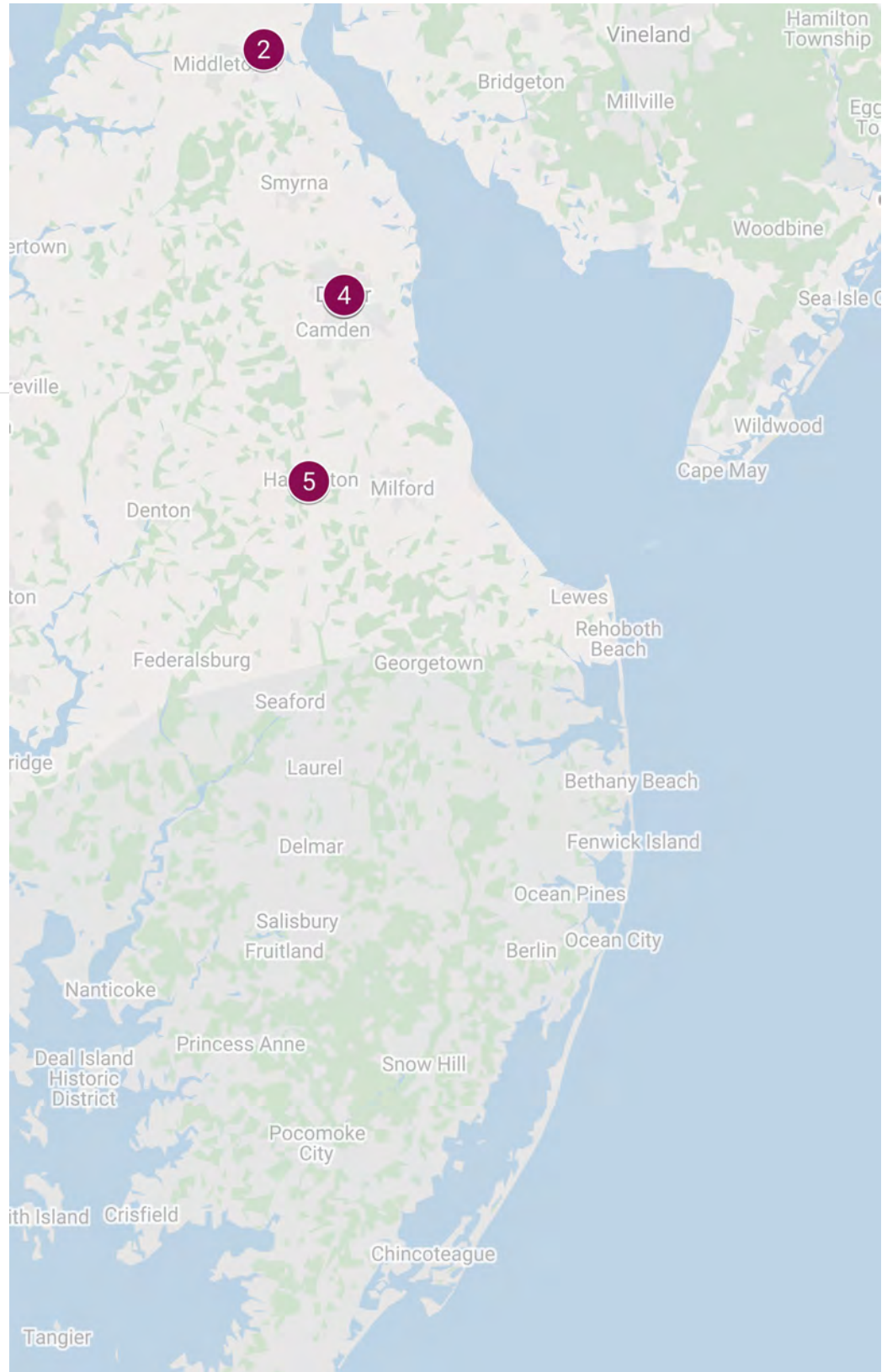
Jack Lewis Road Trip:
New Castle and Kent Counties,
Delaware

Biggs Museum of American Art Driving Tours

Jack Lewis Road Trip: New Castle
& Kent Counties, DE

- 1 Cooch's Bridge
- 2 Old Drawyer Church
- 3 The Green
- 4 Biggs Museum of American Art
- 5 Commerce Street

Travel with the Biggs to discover new art and places artistic inspiration all around us.





Jack Lewis
Cooch's Bridge, 1986
Acrylic on sheetrock
On loan from an
anonymous collector

Directions:

The original Cooch's Bridge was destroyed in the 18th century, but has been replaced nearby in the same general location. Today, the closest you can get to the site of the original Cooch's Bridge is across the railroad tracks on Dayett Mills Road, just south of the Old Baltimore Pike.



This unusually large acrylic painting was completed while the artist fulfilled a large commission of mural paintings on local history for Delaware Legislative Hall.



Jack Lewis
Old Drawyers (n.d.)
 Watercolor on paper
 Gift the Paul Baker Family,
 2008.5.4



Directions:
 This historic Presbyterian church and cemetery was built between 1769 and 1773 and is among Delaware's most picturesque locations. It has been featured in artworks by dozens of local artists like Jack Lewis. Old Drawyers

Church is located at 2839 S. DuPont Parkway outside Middletown.



Jack Lewis
Dover, The Green (n.d.)
 Watercolor, gouache on paper
 Gift of the Paul Baker Family,
 2008.5.16



Directions:
 The Dover Green is the historic center of the town of Dover and has been a market square, state capital district, public park and at the Biggs Museum's back door in the past 300 years. Jack Lewis captured the view west from in front of the building 43 the Green.



Jack Lewis
*Commerce Street,
 Harrington, 1984*
 Watercolor on paper
 On loan from an
 anonymous lender

Directions:
 Jack Lewis made many paintings of towns throughout Sussex and Kent Counties filled with recognizable architectural features as well as the people and pets he encountered during his visit. It is possible that this may be the intersection of Commerce Street and Railroad Avenue in Harrington.



Jack Lewis Road Trip:
Sussex County, Delaware

Biggs Museum of American Art Driving Tours

Jack Lewis Road Trip: Sussex County, DE

- 1 Bridge Branch
- 2 Bridgeville Panorama
- 3 Cape Henlopen
- 4 Georgetown Circle
- 5 South Main Street
- 6

T.S. Smith & Sons Orchard Point Market

- 7 Hearn and Rawlins Mill
- 8 Walnut Street
- 9 Lewes Harbor
- 10 217 Anglers Rd
- 11

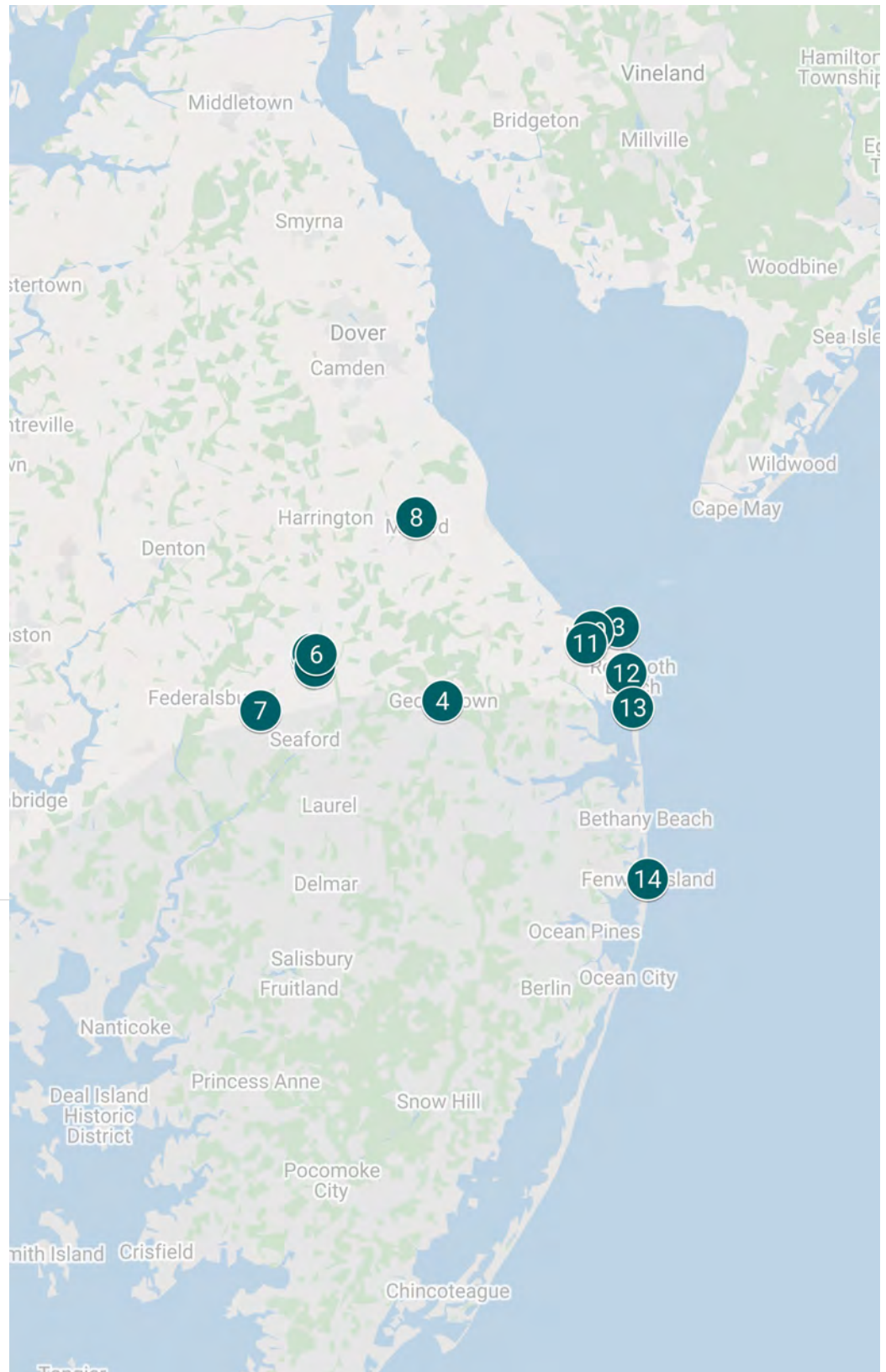
Civilian Conservation Corps Camp

- 12 Rehoboth Art League
- 13

Rehoboth Bay Sailing Association

- 14 Oceanside

Travel with the Biggs to discover new art and places artistic inspiration all around us.





Jack Lewis
Bridge Branch #7,
1987
Watercolor on
paper
On loan courtesy of
the Rehoboth Art
League



Interpreting the
artist's note on the
location of this
landscape, it is
probably
Bridgeville Branch

of the Nanticoke River. North Main Street, heading south toward downtown Bridgeville, passes over the Bridgeville Branch of the Nanticoke River. The creek can be found between 199 and 120 N. Main Street.



Jack Lewis
Bridgeville Panorama #2,
 1988 (?)
 Watercolor on paper
 Gift the Paul Baker Family,
 2008.5.14



Directions:
 Jack Lewis probably created this image looking at Main Street within Bridgeville from Route 13. While this vitally important highway for the artist's local travels was established in 1926, it became a divided two-lane road at around the time the artist first moved to Delaware in the 1930s.



Jack Lewis
Cape Henlopen, 1953
Watercolor on paper
On loan from an
anonymous collector



Directions:
Henlopen State Park, between
Lewes and Rehoboth Beach is
among southern Delaware's
greatest undeveloped attractions.
The entrance of this park is at
15099 Cape Henlopen Drive in
Lewes.



Jack Lewis
GL, 1938)
 Watercolor, gouache and
 charcoal on paper
 Gift the Paul Baker Family,
 2008.5.6

Directions:

Jack Lewis depicted the central circular park of downtown Georgetown, the county seat of Sussex County, in several paintings. This specific view was captured looking roughly east from The Circle.





Jack Lewis
Snow Scene at Bridgeville with Green Shacks,
 1987
 Watercolor, gouache on paper
 On loan from an anonymous collector



Directions:
 Judging by the distance the artist stood from these green shacks, it is very possible that this is the view of South Main Street, near Antique Alley, in Bridgeville from Route 113. Although no longer green, this house bears a strong resemblance to one of the buildings that Lewis recorded there.



Jack Lewis
Smith Orchard,
Bridgeville, 1992
Watercolor, gouache on
paper
On loan from an
anonymous collector



Directions:
The old Smith Orchard
in Bridgeville is now
better known as the very
picturesque T.S. Smith
Orchard Point Market at
9045 Redden Road and
Packing House at 8899
Redden Road.



Jack Lewis
Hearn and Rawlins Mill,
1981

Watercolor, gouache
on paper

Gift the Paul Baker
Family, 2008.5.8



Directions:

Also known as the
Cannon and Ross Mill,
the Hearn and Rawlins
Mill is a historic grist mill
complex located near the
town of Seaford built
about 1880. It is located
at 22517 Rd. 554B in
Seaford.



Jack Lewis

Walnut Street, Milford,
1985

Watercolor, ink on paper

Gift of Sam Profetta

On loan courtesy of the
Rehoboth Art League



Directions:

Walnut Street in Milford appears to have changed significantly in the past 35 years since Jack Lewis recorded aspects of it in this archetypal townscape. As the artist populated his scene with many figures and bustling activity, he may also have taken liberties with the composition of buildings and intersecting roads.



Jack Lewis
Lewes Harbor, 1991
 Watercolor on paper
 On loan from an
 anonymous collector



Directions:
 This harbor is among
 Delaware's most
 iconic destinations
 and is the subject of
 many paintings by
 Jack Lewis. This scene
 may be a view from
 the green space
 between Front Street
 and the Lewes and
 Rehoboth Canal.



Jack Lewis
*Fish Cleaning Station
at Lewes, n.d.*
Acrylic on sheetrock
On loan from an
anonymous collector



Directions:
This congregating
spot for fishermen of
Lewes is in the area
of 217 Anglers
Road in Lewes.



Jack Lewis
*Civilian Conservation
Corps Camp, 1937*
Gouache on paper
On loan courtesy of the
Rehoboth Art League



Directions:
Jack Lewis came to Delaware to record the progress of the workers of the Civilian Conservation Corps (CCC) during the Depression. The CCC camp was on the land where is now built the Huling Cove Apartments.



*RAL Art League
Outdoor Show, 1990*
Watercolor on paper
On loan from the
Rehoboth Art League



Directions:
Delaware's most
important artist colony,
the Rehoboth Art
League, was based at
the 18th century
residence of the
League's founders,
Louise Corkran and
Colonel Wilbur
Corkran. Colonel

Corkran was Jack Lewis's employer who brought him to
Delaware to record the work with Civilian Conservation
Corps during the Depression. The Art League is located at 12
Dodds Lane in Rehoboth Beach.



Jack Lewis
Rehoboth Bay, 1985
Watercolor on paper
On loan from an
anonymous collector



Directions:
This may be a view of the Rehoboth
Bay Sailing Association at 38747
Rehoboth Bay Sailing Association
Lane in Rehoboth Beach.



Jack Lewis
Oceanside, 1993
Watercolor on
paper
On loan from an
anonymous
collector



Directions:
As important as the
beach coastline is
to Delaware's
tourism, it was not
the subject of many
of Jack Lewis's
artworks. This rare
image, entitled
Oceanside, is
probably part of
the long stretch of

beach from Dewey to Fenwick Island.