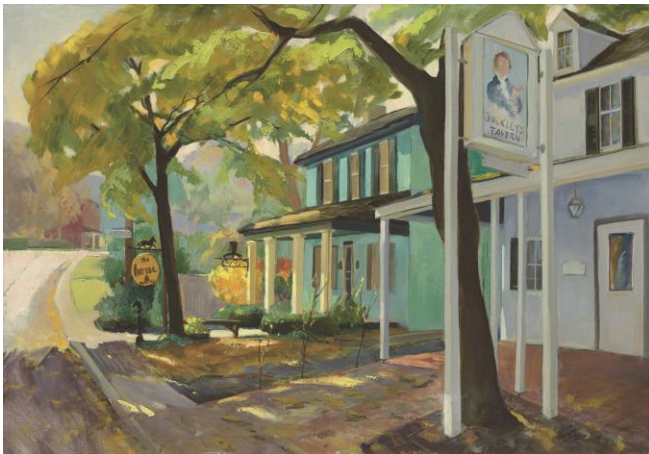


Biggs Museum of American Art

For Immediate Release
January 7, 2014
302.674.2111 ext. 105

Media Contact
Stephanie Fitzpatrick
sfitzpatrick@biggsmuseum.org

Berndt Exhibition Programming Scheduled for January and February *January Berndt Lecture Places Spotlight on His Community Impact*



Dover, DE (January 7, 2014) – The Biggs Museum is pleased to announce that programming for *Refining the Region: the Landscapes of Bayard T. Berndt* will continue into 2014 with several programs that delve deeper into the life and work of local artist Bayard Berndt. The exhibition, which features over seventy pieces of Bayard T. Berndt's works, will be on display at the Biggs Museum until February 23, 2014.

The next program, entitled *Panel Discussion: Bayard Berndt as Artist, Instructor and Mentor*, is scheduled for January 18, 2014. Bayard Berndt was an integral part of Wilmington's art scene during the twentieth century. As an instructor at Wilmington Academy of Art and co-owner of Hardcastle's art supply store in Wilmington he engaged with the artists who helped create the spirit of the city at the time. He provided instruction, encouragement and advice for fellow artists and could often be found discussing Delaware's art scene, and still found time to produce hundreds of his own paintings. This program brings together three individuals who address the impact of Berndt's diverse activities on his work and on the Wilmington artistic community. Participants include: **David Berndt**, son of Berndt and author of Bayard Taylor Berndt: Brandywine Valley Artist; **E. Jean Lanyon**, Berndt protégé and former Hardcastle employee; **Charles Allmond**, Delaware artist and longtime Hardcastle customer. **Ryan Grover**, Biggs Museum Curator, will moderate the discussion.

In February, the Biggs Museum will host two additional programs – the first, on February 8, 2014, will focus on the topic of covered bridges, a popular subject of Berndt's painting. The other, on February 22, 2014, will cover the life and work of frame maker Frances Coll whose pieces often framed the art of Brandywine Valley painters like Bayard Berndt. For more details on the January and February programming, please see the "Event Quick Facts" section below.

About Bayard Berndt

Bayard Taylor Berndt was a 20th century Brandywine Valley owner of the iconic Hardcastle Gallery, and artist who studied under such recognizable figures as Frank Schoonover, N.C. Wyeth and Gayle Hoskins. *Refining the Region: the Landscapes of Bayard T. Berndt* is an exhibition of paintings produced over the course of the artist's sixty-year career. Local history was a passion of his paintings and is often reflected in his large-scale compositions. He was especially enamored with the beauty and heritage of the Brandywine Valley and often focused on his hometown of Wilmington, Delaware. Some of his most recognizable scenes highlight historic commerce on the local waterways, industrialization, urban street views and covered bridges.

Event Quick Facts

Panel Discussion: Bayard Berndt as Artist, Instructor and Mentor

Saturday, January 18, 2014

1:00 to 2:30 p.m. | Free

Bayard Berndt was an integral part of Wilmington's art scene during the twentieth century. This program brings together three individuals who address the impact of Berndt's diverse activities on his work and on the Wilmington artistic community. Participants include: David Berndt, son of Berndt and author of *Bayard Taylor Berndt: Brandywine Valley Artist*; E. Jean Lanyon, Berndt protégé and former Hardcastle employee; Charles Allmond, Delaware artist and longtime Hardcastle customer. Ryan Grover, Biggs Museum Curator, will moderate the discussion.

Saturday, February 8

Frame Making: A Wilmington Tradition

1:00 to 2:00 p.m. | Free

Frames play an important role in our perception of a painting. Early wooden frames were works of art in their own right. Francis A. Coll was a frame maker who worked at Hardcastle from the mid 1920s through the 1960s. During his lifetime, Coll mastered an array of styles, from moldings carved with floral motifs and gilded in pale silvery gold to bold moldings of black lacquer with simple, geometric carving. Today, Coll's distinctive frames enhance paintings in the collections of Brandywine River Museum, Delaware Art Museum, Historical Society of Delaware, Pennsylvania Academy of the Fine Arts and Biggs Museum of American Art. This lecture will focus on the historic profession of frame

making in the Mid-Atlantic, especially Delaware, from around 1750 to the present. Biggs Museum Curator, Ryan Grover, will discuss the variety of historic frames contained within the Museum's permanent collection. Delaware artist, Charles Allmond, who trained with Frank Coll in his studio at Hardcastle, will discuss his personal experiences along with his personal frame making technique. Mike Podmaniczky, Furniture Conservator, will discuss frame conservation and gilding.

Saturday, February 22

America's Covered Bridges: From Vital Mode of Transportation to Nostalgic Symbol of the Past

1:00-2:00 p.m. | Free

As American commerce increased in the early 19th century, a new mode of transportation was needed to facilitate increasing movement of people and goods across waterways. The earliest bridges were simple in design and were limited to the length of the wooden supports. As the industry of bridge building evolved, builders learned to create longer spans using trusses and arches. However, these bridges were made almost entirely of wood and deteriorated rapidly due to exposure to the elements. The practice of building wooden covered bridges spread quickly throughout the country. With the availability of iron in 1830s, wooden bridges quickly became obsolete. Bayard Berndt captured the essence of many of the covered bridges in the Brandywine Valley in his paintings. Though many covered bridges have vanished, storyteller and folklorist Ed Okonowicz will discuss how the surviving structures evoke feelings of nostalgia and have become sources of community pride, stimulate tourism and encourage a deeper understanding of our local history.

About the Museum

The Biggs Museum seeks to serve a diverse public as a regional museum of fine and decorative arts, made from 1700 to present, representing the State of Delaware and the surrounding Mid-Atlantic region. The Biggs Museum engages audiences through a compelling program of temporary exhibitions and programming. The Biggs Museum encourages the development of creativity and an appreciation for art by offering a comprehensive slate of educational programming for all ages. The Biggs Museum of American Art is a private, non-profit 501(c) (3) organization.

Hours of Operation: Tuesday through Saturday; 9:00 a.m. until 4:30 p.m. Sunday; 1:30 p.m. until 4:30 p.m.

Admission: Biggs Museum is free to the public year-round. Fees may apply to certain programs and special events.

The Biggs Museum of American Art

406 Federal Street
Dover, DE 19901
302.674.2111
www.biggsmuseum.org

Media Contact: Stephanie Fitzpatrick 302.674.2111 ext. 105,
sfitzpatrick@biggsmuseum.org

###