

MUSE LETTER

Museum News p.2 * Exhibitions Programming p.3
Special Events & Education p.4&5 * Page B p.6
Collection Connection and Events p.7 * Fiscal Year 14-15
and Member Roll Call p.8&9 * Statements of Financial Position
and Annual Fund Donors p.10&11

Biggs Museum
of American **Art**

New Staff:



Pictured: Amanda Feusner (left) and Regina Lynch (right)

MEET AMANDA AND REGGIE

Amanda Feusner:

Assistant to the Director/Office Manager

Amanda Feusner, the Biggs Museum's new Assistant to the Director and Office Manager, joins the Biggs staff after a short time as an Assistant Manager at White House Black Market, where she held several responsibilities involving finance, sales, and staff management. Before her time in sales, she served as an Administrative Support Specialist at the Defense Department, during which she systematized the payroll structure, managed the Division Director's calendar, and dealt directly with Senior Department of Defense officials. She is also a deeply committed mother to her four-year-old daughter. She is thrilled to be on board to keep our operations running efficiently!

Regina Lynch:

Curator of Education Fellow

Regina Lynch is returning to her Delaware roots as a member of the team at the Biggs. She comes to the museum most recently from the Huntington Library, Art Collections, and Botanical Gardens in California where she worked with high school volunteers and family programs. Prior to her work on the West Coast she worked at Winterthur Museum, Garden, and Library coordinating their adult programming as part of their Public Programs Department. Regina earned her B.A. in Art History and Theatre from Marymount Manhattan College and her M.A. in Art History from Temple University. She's excited to get to work expanding our educational programming both at the museum and online!

Letter from the Director

Dear Friends,

It has been an exciting—amazing — time at the museum since the opening of *Illuminating the Word: The Saint John's Bible* on December 4th. The exhibition, which was extended by popular demand through April 24th, saw unprecedented attendance at the Biggs. Thousands of visitors, adults and children from every walk of life were inspired by its beauty and amazed by the sheer scale of the project; A project with over 1,000 pages of illuminated manuscript, 70 of which were on display in our galleries. There was remarkable appreciation of *The Saint John's Bible* as an extraordinary example of the book arts, undoubtedly the most important project of its kind in over 500 years. Similarly, people familiar with the Bible's message were captivated by the illuminations depicting, in very modern terms, the imagery this timeless book. We are pleased that so many of you had the opportunity to visit the exhibition. We were delighted to be able to provide copies of *The Saint John's Bible* books and cards relating to the exhibition in our shop, and will continue to carry *The Saint John's Bible* merchandise at the museum in the weeks to come. If you missed the show, I encourage you to visit our web site and to enjoy the documentary film on *The Saint John's Bible*, available there for a short time.

Another recent achievement of note is the acquisition and reunion of the two Charles W. Peale portraits showcases in depth on page seven of this newsletter. It points out a fundamental responsibility that museums have, not only to exhibit, but also to preserve objects of importance. The opportunity to unite a pair of portraits by a renowned painter separated for 23 years was an opportunity that might never come again. Together they were the work of art, but separated, the art was incomplete. Thanks to the vision of our Collection Committee and the Biggs Board, and with the help of our friends at the Choptank Foundation, we were able to address our fundamental role as a museum, to preserve for future generations, a unique and fragile piece of our cultural and creative American heritage.

I also just want to thank all of you who have so generously contributed to the museum through annual fund, grants, or special events over the past year. We have also attracted many new members this year and welcomed membership renewals. To all of you we are most grateful. The Biggs Museum is your museum, and it exists solely through the generosity of the Delaware community. Thank you and visit often.

Sincerely,

Charles Allan Guerin
Executive Director



365: Elements in Time

EXHIBITION OF THE WORKS OF BARBARA WARDEN

Open: May 7 – July 24, 2016

Sneak Peak: Friday May 6th – 5-7 p.m.

Artist Reception: Friday, June 3rd – 5-7 p.m.

More programming detail can be found in the calendar on the following page.

Pictured on Cover

Some of the earliest artists' depictions of the passage of time are allegorical figures of a wizened man with a long silvery beard, often winged, holding an hourglass. This imagery most likely originates with Classical depictions of Chronos, the Greek titan known as the Lord of Time. Artists have used this archetype to influence public perceptions of wisdom, knowledge and appreciated death while reinforcing the notion that the subject of time should be left in the hands of people old enough to have appreciated its powerful effects first-hand. Barbara Warden has embraced this responsibility with her latest and perhaps most ambitious artistic project to date in the Biggs Museum's exhibition *365: Elements in Time*.

Having enjoyed success as a contemporary fiber artist, lobbyist, freelance photographer, and arts instructor, Barbara Warden returned to her art school interest in what she describes as the "immediacy of drawing" and devoted the full calendar year of 2015 to create visual representations of the concept of time. Each day, she sat in front of a blank sheet of paper and began her exercise with a single gesture of her hand across the page. From that unique daily gesture, a technique associated with expressionist art forms of the 20th century, entire configurations of abstract forms were layered and scraped away using many tools such as graphite, color pencil, charcoal, paint, crayon, oil pastel and machine stitches. Each drawing session could last between 3 to 8 hours. She challenged herself to draw at least one composition each day. This ritual of disciplined daily practice resulted in a large body of more than 350 individual drawings.

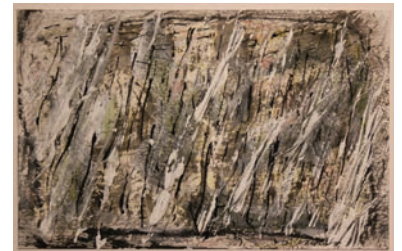
Warden has been working with themes of time for several years. Invited into a group exhibition at the Biggs Museum in 2012, she used the photographic notion of capturing a quick "moment in time" to dictate the pace and complexity of her abstract drawings. Barbara broke the picture plane of her work into grids to dedicate prescribed periods of time to each section. Each moment was memorialized in a sparing number of strokes across her compositions.

In 2015, these reflections on time shifted to her observations of impermanence. As she worked through the year, she realized that her drawings were largely examinations of natural elements such as bone, ice, stone and wind that demonstrated the visual effect of time. Ice melts, bone decays, stone erodes and wind dissipates. Although highly abstracted to emphasize line, depth, texture and especially the rhythmic repetition of individual forms, much of Barbara's drawings reflect landscape, still life and figurative studies. Barbara's

explorations of elements through time were not linear, as she often returned to her artistic subjects each time discovering new effects she wished to record. Through her examinations of the corporeal, the artist discovered new conceptual themes that tied importantly to her notion of time including chance, fragments and memory—while each drawing is a complete work, some works pieces are more complex recreation of the artists individual elements and are often larger and framed.

While few of Barbara's works are individually titled with anything more complex than an inventory number, the artist has discovered literary quotations that offer a relevant context for her artistic themes and groupings. These phrases often display a very human subtext of mortality and interconnectedness. In this light, Barbara's works, just like her artistic themes, become deeply personal metaphors for the effect of time upon the body, soul and its environment.

The exhibition, *365: Elements in Time*, will be on view in the Founders Gallery of the Biggs museum of American Art from First Friday May 6 through July 25, 2016. A reception to meet the artist, Barbara Warden, will be held in conjunction with an opening reception for the Biggs Shot juried photography competition on First Friday, June 3, from 6-8pm. On June 11, Barbara Warden will also lead a workshop to encourage participants to experiment with many different materials (reservations are required). For more information, see the museum's website at www.biggsmuseum.org or call 302.674.2111.





BIGGS KIDS & mini masters

May:

Biggs Kids (Ages 5-10) – May 7th
Mini Masters (Ages 3-5) - May 11th
 All day
 Price: Free with adult admission

To complement the feature exhibit of drawings by Barbara Warden, and to coincide with Delaware's Dover Day celebration, we're inviting our Biggs Kids to be inspired by Delaware landscapes and portraits of Delawareans from our collection and draw their favorite place or person in Delaware.

June:

Biggs Kids (Ages 5-10): June 4th
Mini Masters (Ages 3-5): June 8th
 All day
 Price: Free with adult admission

Harness the power of the sun! Come to the Biggs and make sun "photographs" with light sensitive paper and native Delaware plants

July:

Biggs Kids (Ages 5-10): July 2nd and 4th
NO MINI MASTERS
 All day
 Price: Free with adult admission
 Celebrate America's past! Be inspired by our historic, hand-carved eagle, and make your own eagle using a tracing of your hands!



MAY

14



Biggs Museum Gala: An Affair with the Arts

Saturday, May 14th, 6–11 p.m.

Price: \$200/person

Mark your calendars for Delaware's premier event to celebrate the arts, history and culture in Dover and around the state. This elegant, tented event will feature exclusive tours of the museum collection, an exciting live auction, gourmet catering area favorite Burnt Sienna. Plus, this year's event will include several modern twists and surprises you won't want to miss!

Last year's Gala SOLD OUT! Please purchase tickets early to guarantee space. For questions call (302) 674-2111 or visit www.BiggsMuseum.org.

M&T Bank

Delaware by Hand

28

Members' Day Outdoor Show

Saturday, May 28th

10:00 a.m. – 4:00 p.m.

Zwaanendael Park, Lewes

Price: Free

Kick off your summer with the Delaware by Hand Members' Day Outdoor Show at Zwaanendael Park in Lewes, DE. Nearly 50 Delaware By Hand artists will display furniture, wood, metal, glass, ceramics, photography, fiber, sculpture, baskets, prints, jewelry and paintings for sale.



Art Ventures Summer Camps!

Register soon!

Camps sell out fast! Call (302) 674-2111 ext. 110 or visit www.biggsmuseum.org to register

JUNE

3

Artist Reception: *365: Elements in Time & Biggs Shot*

Friday, June 3rd

5-7 p.m.

Meet the artists and enjoy refreshments.

11

A Drawing Workshop with Barbara Warden

Saturday, June 11th

1-4 p.m.

Price: \$30/\$25 for members (includes supplies)

Join featured artist Barbara Warden for a walkthrough of her exhibit, *365 Elements in Time*, which features daily drawings done over the course of a year in various kinds of media, including paint, ink, graphite, pastel, and Sharpie markers. This workshop will focus on Warden's expansion of the definition of drawing to include these varied materials and participants will get the chance to try their hand at some of her drawing techniques.

Pre-registration is required.

DROP-IN ANYTIME!

Make your mark at the Biggs! To coincide with Barbara Warden's exhibit of drawings in multiple media, we invite visitors of all ages to experiment with paint, graphite, ink, and pastels and take or contribute a drawing inspired by the show.

Coming Soon!



MAURICE SENDAK:

**The Memorial Exhibition
50 Years, Works, Reasons**

July 30 – September 11, 2016

The Biggs Museum is proud to partner with the Dover Public Library to feature the work and biography of one of America's most beloved children's authors and illustrators, Maurice Sendak. Known principally for his publication and now a major motion picture, *Where the Wild Things Are*, this exhibition spans the career and work of this visionary artist. The exhibition will be accompanied by a variety of both scholarly

and family friendly programming and hands-on activities. Stay tuned, more information will be in the summer Museletter and posted online at www.BiggsMuseum.org.



SUMMER ARTVENTURE CAMPS

Registration Now Open!

Price: \$150 per camper, per week
(\$125 for members)

Young artists ages 6 to 9 can spend a week in July at art camps designed to inspire creativity. Each camp will be led by museum staff in the Child HELP Foundation Gallery Monday through Friday from 9 a.m. until 12 p.m. Children will explore the museum during these camps and discover many different types and styles of art such as painting, sculpture and drawing. Please make sure children wear old clothing and bring a snack each day. Pre-registration is required. Be sure to register early, these camps fill up fast!

COLOR EXPLOSION!

Monday, July 11 – Friday, July 15, 2016
9 a.m. – noon

Let them spend a week at the museum exploring the many ways that artists in our collection use color. Campers will get a chance to try out some very colorful art projects of their own!

BIGGS(S) EARTH

Monday, July 18 – Friday, July 22, 2016
9 a.m. – noon

If your camper is a future ecologist, botanist, or zoologist, then this session is for them. Send them to the Biggs to learn about the plants and animals depicted in our collection and the different ways people use natural resources to create art and furniture. Each day campers will create a different eco-centric craft!

ME, MYSELF, AND I

Monday, July 25 – Friday, July 29, 2016
9 a.m. – noon

Let your camper have some "me time" with a week at the Biggs. This week campers will learn about the people and places that were important to the artists in our collection by looking closely at their artwork. Then, they'll get a chance to write their own biography, create self-portraits, and portray the people and places that are important to them.



Youth Art Month



Youth Art Month



The Saint John's Bible Tours



Suzanne Moore: An Artist of the Bible Lecture



Suzanne Moore: An Artist of the Bible Lecture



The Saint John's Bible Tours



Biggs Kids



Biggs Kids



The Saint John's Bible Activity



Biggs Kids



Hands-on Michael Robear Lecture



Hands-on Michael Robear Lecture



Board Member Kathy Southern meeting with U.S. Senator Tom Carper

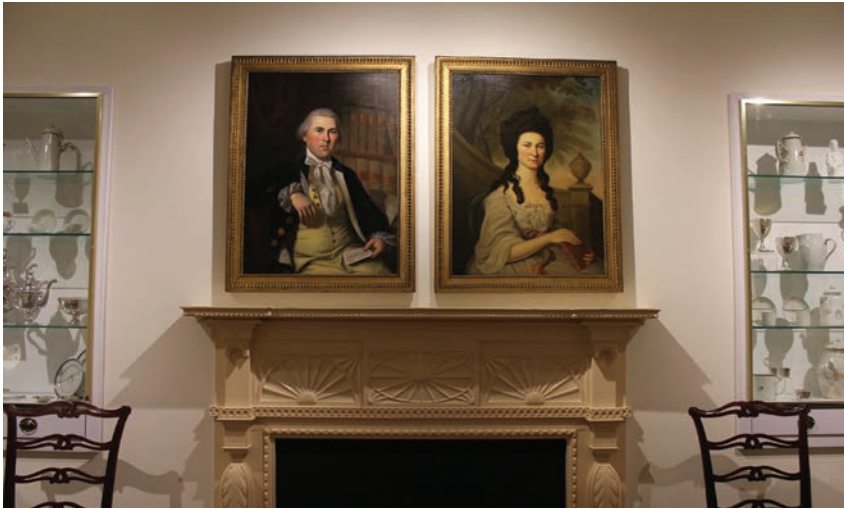


Hands-on Weaving Lecture

Want to see more photos from Biggs Museum programs and special events? 'Like' us on Facebook. Search 'Biggs Museum of American Art.'



Collection Connection & Events



Shakespeare once said, “The course of true love never did run smooth,” and such is the case with a pair of lovers who have just been reunited in the Biggs Museum’s permanent collection. The newest acquisition of a portrait by renowned artist Charles Wilson Peale depicts Mrs. Jane Hunter Ewing and is a companion piece to our Peale portrait of Jane’s husband, Maskell Ewing. The dual portraits were commissioned and created in 1787 and 88 and for centuries they were passed down through generations of the Ewing family. In 1992, however, the portraits were separated at auction. The Biggs is now thrilled to be able to reunite this pair after over two decades of separation.

During their lifetimes, the Ewings lived in homes in New Jersey and Pennsylvania, where they raised five children. Their final home, in Villanova, Pennsylvania, stood on what is now the campus of Villanova University. Maskell Ewing made his living as a lawyer, a fact which is referenced in his portrait through the presence of – among other objects – a book of New Jersey Laws and a letter addressed to Ewing from fellow lawyer W.C. Houston. To the right side of the painting, there also sits a group of papers referencing the year 1787, which was the year of the second sitting of the New Jersey Assembly, for which Ewing served as a clerk. This date also references the date of the painting, and the year in which Maskell and Jane were married.

Certain aspects of Jane’s portrait may also reference this time in the young couple’s marriage. The inclusion of delicate, white flowers on her bodice may reference her virtuous nature and position as a young wife, and Peale’s portrayal of Jane holding her place in a book is most likely a reference to her education and upbringing. Additionally, Jane’s elaborate dress and hair are both appropriate to the mainstream fashions of the 1780s and probably signify her place in high society.

The addition of Jane’s portrait to the Biggs permanent collection offers a fascinating look at the many lives and roles paintings can have throughout their existence. At the time of their creation, the works represented the social position and marriage of their sitters, as well as the artistic achievement of Charles Wilson Peale. For generations after Maskell and Jane’s deaths, they signified the Ewing family’s heritage and importance in the Delaware Valley. And now, having been returned to one another, the pair of paintings represent the power and responsibility American Art institutions like the Biggs have to tell and preserve the stories of our nation’s past.



*See the video about
this piece at
www.BiggsMuseum.org.*



Call for Photographers: **BIGGS SHOT** Deadline Extended to May 6, 2016

The Biggs Museum of American Art has extended the deadline for application to the Biggs Shot 2016 Regional Photography Competition due to a change in its exhibition schedule. This juried competition will feature the work of professional and emerging photographers, working and/or living in the Mid-Atlantic region (open to artists from Delaware, Maryland, Virginia, Washington DC, Pennsylvania, and New Jersey).

This year’s juror is the Biggs Museum’s newly appointed Executive Director, Charles A. Guerin. Biggs Shot will be his official introduction to the exceptional talent of Mid-Atlantic photographers and Charles brings his own photo credibility to the competition. In addition to arranging and curating numerous exhibitions of world-class modern and contemporary photographers, including Ansel Adams and Edward Weston, Charles Guerin was the Acting Director of the Center for Creative Photography in Tucson, AZ in 2002. He also arranged the gift of the George Stephanopoulos Family Collection of photography to his previous employer, The Hyde Collection in Glenn Falls, New York.

Winning images, selected from digital submissions, will be featured in a 2016 museum exhibition and the best in show will win a \$1,500 purchase prize.

For more details or to apply visit,
www.BiggsMuseum.org

Biggs Shot Updated Competition Timeline

Application deadline: May 6, 2016 • Notification by: May 13, 2016
Winning artists responsible for delivering their works: May 28, 2016
Exhibition Dates: June 3 - Sept. 25, 2016

ANNUAL REPORT/ROLL CALL

The Biggs Museum Board of Trustees and Staff extend their deepest appreciation to the following individuals from fiscal year July 1, 2014 – June 30, 2015 for their support of the museum through membership. Membership supports the resources needed to produce and promote the highest caliber of informative, inspiring, and thought-provoking exhibitions and educational programming within the museum.

SEWELL'S CIRCLE (\$1,000)

Dr. and Mrs. Henry DeWitt
Dr. and Mrs. Keith Hamilton
Dr. Kathleen Jacobs
Mr. and Mrs. James Kilvington

DIRECTOR'S CIRCLE (\$500)

Mrs. Nancy Breslin and Mr. Peter Caws
Dr. and Mrs. Henry DeWitt
Mr. and Mrs. James Flood, Sr.
Dr. and Mrs. Keith Hamilton

CURATOR'S CIRCLE (\$250)

Hon. and Mrs. Henry duPont Ridgely
Dr. and Mrs. John Forest
Ms. Joanne Armstrong
and Mr. Richard Janney
Mr. and Mrs. Robert Koenke
Mr. and Mrs. Ken Konesey
Dr. Michael Mattern
Mr. and Mrs. Robert McKennett
Dr. and Mrs. Stephen Putman
Mr. and Mrs. Joseph Raymond
Mr. Robert Willison

RECIPROCAL MEMBERS (\$125)

Ms. Susan Bartley
Ms. Michelle Beachler
Mr. and Mrs. Edward Bittner
Ms. Susan Brynteson
Ms. Anne Buck
Mr. James Byrne
Mr. George Christensen and Mr. Steven Kotrch
Mr. James N. Coker
Dr. Geraldine Coyle
Ms. Ruth Draper
Ms. Susan Fewell
Ms. Mary Folan
Ms. Isabelle Frank
Mrs. Louise Gatanas and Col. Mark D. Gatanas
Ms. Jane Harp
Mrs. Joan Heckman
Ms. Carolyn Hodges
Ms. Karen Hornor, Hidden Moon
Mr. and Mrs. Charles Huettnier
Mr. and Mrs. Peter Jennings
Ms. Fran Johnson
Mrs. Jo Anne Joyner
Mr. and Mrs. Fred Kaltreider
Ms. Nancy Kassner
Mr. and Mrs. Michael Kelly
Ms. Earlene Kelter
Mrs. Marion Klein
Mr. and Mrs. Dan and Carol Lettieri
Mr. and Mrs. Charles Miller

Mr. Richard Mowery and Mr. Joseph Conn
Mr. Jonathan Morris
Mr. and Mrs. Frank Murphy
Ms. Kanchan Nadkarny
Dr. and Mrs. Steven Nemcic
Mr. and Mrs. Michael Nesterak
Mr. John Newton and Mr. Mowry Spencer
Ms. Chandra Owens
Mr. and Mrs. Ted Palmer
Dr. Patt Panzer and Mr. Carson T. Zullinger
Mr. and Mrs. Richard Parsons
Mr. and Mrs. David M. Partridge
Mr. Frank Richardson
Mr. and Mrs. John Roberts
Ambassador and Mrs. Edward Rowell
Mrs. Cindy Small
Dr. Stephanie Steckel and Dr. Steve Steckel
Mr. and Mrs. James Strickland
Mr. and Mrs. Don Stuhlman
Mrs. Susan Terry
Ms. Karen Usselman and Mr. Jeffrey Booth
Mr. and Mrs. John Vandorpe
Dr. and Mrs. Andrew Willet
Ms. Laura Yiengst, Esquire
Mr. and Mrs. J. Cameron Yorkston
Hon. and Mrs. Rob Young

FAMILY MEMBERSHIPS (\$75)

Mr. and Mrs. Nicholas Adams
Mr. and Mrs. John Armistead
Dr. and Mrs. William Bach
Reverend and Mrs. Donald Bane
Mr. and Mrs. Robert Bauer
Ms. Maureen O'Mara
and Mr. Richard Bazelow
Mr. and Mrs. James Brown
Mrs. Kenneth P. Brown
Mr. and Mrs. Peter Bull
Ms. Patricia Bushey
Dr. and Mrs. John Capodanno
Ms. Elizabeth Carlson
Ms. Laura Cantor Chupp
Mr. and Mrs. Robert Connelly
Mr. and Mrs. Ed Cregar
Mrs. Robert Donaghy, Jr.
Mr. and Mrs. John Dunham
Col.* and Mrs. George W. Findlay
Ms. Louise Gatanas
Dr. and Mrs. John Gardner
Ms. Erica Giles
Ms. Pricilla Goldsmith
Mr. Robert Grabowski
Mr. William Hare
Mrs. Patricia Heather
and Mr. Don Butterworth
Mr. and Mrs. Glenn Hitchens

Mr. and Mrs. Eldon Homsey
Mr. and Mrs. Thomas R. Keane
Ms. Andrea Kreiner
Ms. Ami Leaming and Mr. Timothy Slavin
Mr. and Mrs. Mike Lovett
Dr. and Mrs. Francis Marro
Mr. and Mrs. Dan Marsh
Mr. and Mrs. Joseph McDaniel, III
Mr. and Mrs. Custis McNeilly
Mr. and Mrs. Gil Neild
Hon. and Mrs. John Noble
Mr. and Mrs. Joseph Parks
Mr. and Mrs. Guy Pierce
Ms. Sandy Phelan, *The Stepping Stone*
Mr.* and Mrs. Richard E. Poole
Mr. and Mrs. Hans Reigle
Ms. Frances Riddle and Mr. Bob Frazier
Mr. and Mrs. David Rutt
Mr. Robert Schock
Mr. Erv Schleifer
Mr. and Mrs. Ted Siegel
Mr. and Mrs. George Smith
Dr. Stephanie Steckel and Dr. Steven Artz
Mr. and Mrs. Willis Weldin
Mr. and Mrs. Edward Wilson

DBH/ARTIST MEMBERS (\$60)

Mr. and Mrs. Lloyd Abrams
Bonis Avibus
Ms. Connie Ballato, *Sun Glass Studio*
Mr. John Baker, *Transforming Collections*
Ms. Susan Bartley, *Arts Ltd.*
Mrs. Anna Biggs, *Anna Biggs Designs*
Ms. Denise Bendelewski, *Magnolia Baskets*
Ms. Jennifer Boland
Ms. Linda Bolt, *Linda Bolt Designs*
Mr. and Mrs. Merritt Burke
Ms. Kathy Buschi
Ms. Lesley Campana,
The Celtic Knot Studio; LLC
Mr. Derek Carlson
Mr. Robert Casseday,
Below Book Auto Sales, INC.
Mr. John Chickadel, *Pike Creek Cabochons*
Ms. Sharon Cohee, *Baskets by Shar*
Ms. Carmela Coleman,
Carmela Coleman Pottery
Mrs. Constance Costigan
Mr. Gary D. Crowl, *Beach Art*
Ms. Susan Donohoe, *Salt Bleu*
Ms. Lisa Edmonds, *Cape Treasure*
Mr. Eddie Folz
Mr. Carl Forsberg
Mr. Tom Frey, *Tom Frey Woodturner*
Ms. Sara Gallagher
Ms. Gerilyn Gaskill
Ms. Lara Ginzburg
Mr. and Mrs. Sterling Green,
Whimsical & Functional Pottery
Ms. Tara Grim
Mr. Fritz Grubb
Ms. Judy Hagen, *2nd Time Designs*
Ms. Fran Hart
Ms. Ania Hawley, *Andean Hands LLC*

ANNUAL FUND DONORS

Donations to the Annual Fund provide an important foundation for art-related learning and exploration that takes place daily at the Biggs Museum. The museum is grateful to its Annual Fund donors, as these donations are the foundation of the museum's support. This Annual Fund roster reflects donations made in fiscal year July 1, 2014-June 30, 2015.

\$5,000 and above

Dr. and Mrs. Keith Hamilton
Dr. Kathleen Jacobs

\$1,000 to \$4,999

Child HELP Foundation, Dr. Basilio N. Bautista
Dr. and Mrs. Henry DeWitt
Draper Holdings, Mr. Tom Draper
Dr. and Mrs. J. Ritchie Garrison
Mr. and Mrs. Pierre Hayward
Mr. and Mrs. Joseph McDaniel, III
Hon. and Mrs. Henry duPont Ridgely
Mrs. Kathy Dwyer Southern and Mr. Hugh Southern
Mr. David Tabler
Ms. Anne Verplanck

\$500 to \$999

Bank of America Charitable Foundation

Ms. Isabelle Frank

Mr.* and Mrs. Richard E. Poole
Mr. and Mrs. David M. Partridge

\$250 to \$499

Mrs. Joanne Armstrong and Mr. Richard Janney
Sen. Brian and Mrs. Rocky Bushweller
Mr. James N. Coker
Hon. Nancy W. Cook
Mrs. Holly Johnson*
Mr. and Mrs. Gil Neild
Mr. and Mrs. Joseph Raymond
Mr. Cannon Spotswood
Ms. Georgeanna L. Windley
Hon. and Mrs. Rob Young

Up to \$249

Mr. and Mrs. Ralph Adkins
Dr. and Mrs. Steven Alban
Ms. Gloria Allen
Mr. and Mrs. David Augustson
Mrs. Harry F. Bader*
Mr. and Mrs. David L. Bainbridge
Ballet Theatre of Dover
Mrs. Ronald Bauman
Mr. and Mrs. Paul Bedesem
Mr. and Mrs. Charles Biggs
Ms. Mary Bing
Mrs. Theda Blackwelder
Ms. Elaine Brenchley
Mr. and Mrs. C. Christopher Brown
Mr. and Mrs. David Brown

ANNUAL REPORT/ROLL CALL

Ms. Sheila Mann Hernesh
 Ms. Marian Hertzog
 Ms. Karen Horner
 Ms. Maureen Ickrath
 Ms. Diane Issel, *Pottery Plaques*
 Ms. Ingrid Jackoway
 Ms. Deborah Johnson, *Deborah Johnson Art*
 Ms. Margaret Johnson, *A Peace of Paper*
 Ms. Nancy Jamison,
 Delaware Basket Makers Assn.
 Ms. Jane Mayer, *Jane Mayer Pottery*
 Ms. Michelle Jatko
 Ms. Gilda Jennings
 Ms. Dolores Josey
 Ms. Zelma Nicholas, *Just Zelma*
 Ms. Lianne A. Kane, *Bird Lovers' Loft*
 Mr. and Mrs. Marty Kristula, *Amazing Glasse*
 Mr. Jack Knight
 Mr. and Mrs. Victor Letonoff, *Studio 510*
 Ms. Kathy Lindemer, *Bay Moon Design*
 Ms. Mary Galligan Mathieu,
 Underhill Pottery
 Ms. Ramona Maziarz
 Ms. Linda Medunick
 Mr. Vic Meixell
 Ms. Dolores Michels
 Ms. Jane Kavanagh Morton
 Ms. Aina Nergaard-Nammack,
 Nammack Studio
 Mrs. Jan Miller, *Neptune's Daughter*
 Ms. Zelma Nicholas
 Ms. Marilyn Nugent
 Ms. Barbara Petterson
 Ms. N. Lisa Pilchard, *Metal Wear*
 Ms. Annette Plitman, *SugarWraps*
 Mr. Michael Quattrociocchi
 Rev. Dr. and Mrs. Charles Ransdell
 Ms. Marcia Reed
 Mr. Jim Rehak
 Ms. Irma Reinhold
 Ms. Sandra M. Ridgely,
 Cane & Reed Creations
 Mr. Steve Rogers
 Ms. Maria Sadler, *Kalypso Pottery*
 Mr. Peter Saenger, *Saenger Pottery*
 Mr. Robert Sample
 Ms. Gwenn Schroll, *Gwenn's Glass Gallery*
 Ms. Stephanie T. Seeman,
 See Glass Studio
 Mr. Nick Serratore
 Ms. Roseanne Smith, *Pottery with Love*
 Dr. Gavin Standish, *The Tole Patch*
 Mr. Keith Steck
 Ms. Barbara Stephens
 Ms. Tara Grim, *Tara's Studio Art Gallery*

Ms. Donna Teleis,
 Menagerie of Artisans at Penn's Place
 Ms. Debi Thompson
 Mr. Mark Turner, *The Art of Mark V. Turner*
 Mr. James Ulry
 Mr. Anthonie Verwijs
 Ms. Betsey VonDreele
 Ms. Jacklyn Weldin
 Ms. Barbara Freeman Warden, *Firetalk Arts*
 Ms. Brenda Williams
 Ms. Deborah Wright, *Gossamer Wings*
 Mrs. Elizabeth Zando, *Zando Designs*

INDIVIDUAL MEMBERS (\$40)

Mr. and Mrs. Alexander Apostolina
 Ms. Ellen Arthur
 Mrs. Susan Attix
 Mrs. Harry F. Bader*
 Mrs. Kay Bailey
 Ms. Theda Blackwelder
 Ms. Linda Blaskey
 Ms. Elaine Brencley
 Mr. and Mrs. Tom Byrd
 Ms. Stacy Coleman
 Mrs. Elizabeth Collard, *Fleur-de-Lis Studio*
 Ms. Wendy Cooper
 Ms. Dorin Crockett
 Mr. and Mrs. Bennett Downes
 Mrs. Nancy DuPont Cooch*
 Ms. Nancy Edwards
 Ms. Cyndi Eldred and Ms. Yvonne Kirksey
 Ms. Joan Fabbri
 Ms. Lynn Farina
 Ms. Marjorie Felty
 Ms. Judith Fisher
 Mrs. Jane Fox
 Mr. Iamthe Gifts
 Mr. Edward Gordon
 Ms. Martha Griffin
 Mrs. Vivian Griffin
 Mr. Mark Grove
 Mr. Bob Heifetz
 Ms. Sandy Hendrickson
 Ms. Rosemary Hieronymous
 Ms. Lee Hoover
 Ms. Ann Baker Horsey
 Ms. Maggie Dryden Hurley
 Mr. Paul Janiga
 Mr. Charles Jennings
 Mr. Allen Jones
 Mrs. June Katz
 Mrs. Eunice LaFate
 Mrs. Grace Lowe
 Mr. and Mrs. Sanford Marcus
 Mrs. Eva Marshall

Mr. and Mrs. David W. Matsen
 Ms. Melanie McCarraher
 Mrs. Chris McDonnell
 Mr. Arthur McLaughlin
 Ms. Hannah McLennan
 Ms. Joan McNiece
 Mr. and Mrs. Brian Michalski
 Ms. Ann Murray
 Mr. Kenneth Naegeli
 Ms. Donna Ortelli
 Mrs. Anita Peghini-Raber
 Mr. Gary Pippin
 Mr. and Mrs. Zadoc Pool
 Ms. Connie Ragin
 Mr. and Mrs. Harry H. Rhodes
 Mr. Kenneth Robertson, Jr.*
 Hon. Battle Robinson
 Mr. and Mrs. Pete Rogers
 Ms. Inez Sunshine
 Ms. Ellen Scarpitti
 Ms. Charlotte Smith
 Mr. Tom Smith
 Mrs. Kathy Dwyer Southern
 Mr. Gerald Sovinski
 Dr. Joyce Hill Stoner
 Mr. and Mrs. William Suleski
 Ms. Inez Sunshine
 Ms. Carol F. Taylor
 Ms. Leah Van Rees
 Mrs. Mary Ann Varanko
 Ms. Anne Verplanck
 Hon. Nancy H. Wagner
 Ms. Catherine Walls
 Ms. Patricia Warner
 Ms. Elizabeth Firestone Wehle
 Ms. Maureen Welsh
 Mr. and Mrs. George Wicks
 Ms. Sharon Wisneski
 Ms. Georganna L. Windley
 Mr. Thomas Woodward
 Mr. George Wright, Jr.
 Mr. Edward Yalisove
 Ms. Ann Zion

*deceased

Up to \$249 (cont.)

Mr. and Mrs. John Cairns
 Hon. and Mrs. Thomas Carper
 Mr. and Mrs. John Coleman
 Chesapeake Utilities
 Mr. and Mrs. Robert Chu
 Mrs. Edward W. Cooch, Jr.*
 Dr. Geraldine Coyle
 Mr. and Mrs. Alan D. Craig
 Mr. and Mrs. Ed Cregar
 Ms. Shirley Cunningham
 Ms. Barbara Delp
 Ms. Patricia Deverall
 Mr. Kevin Donnelly
 Dover Federal Credit Union
 Mr. and Mrs. Robert Duncan
 Ms. Maria Teresa Emmons
 Hon. and Mrs. Charles Eyer
 Ms. Marge Felty
 Mr. and Mrs. Keith Fitzgerald
 Mr. and Mrs. Peter Fitzpatrick, Sr.
 Mr. and Mrs. Eddie Folz
 Mr. and Mrs. Carl Forsberg
 Ms. Suzanne Forsman
 Frank E. Schoonover Fund
 Mrs. Louise Gatanas and Col. Mark D. Gatanas
 Mr. Richard A. Givens, II
 Ms. Ellen Goldsmith

Mr. and Mrs. Darren Guido
 Mr. Philip Guidry
 Ms. Fran Hart
 Ms. Nancy Hartnett
 Mrs. Patricia Heather and Mr. Don Butterworth
 Mrs. Joan Heckman
 Mr. and Mrs. Thomas Heller
 Hon. George Hering
 Mr. James Herring
 Mr. and Mrs. Thomas Jackson
 Mr. and Mrs. David Kaiser
 Mr. and Mrs. Thomas R. Keane
 Dr. and Mrs. Stuart Knapp
 Mr. and Mrs. Robert Koenke
 Dr. and Mrs. Charles Klein
 Reverend Dr. and Mrs. Karl R. Kraft
 Mrs. Esther Krueger
 Mr. and Mrs. David Larned, Jr.
 Mrs. Lewis Matilda
 Dr. Michael Mattern
 Mr. and Mrs. Edward Mayer
 Ms. Hannah McLennan
 Mr. and Mrs. David Mellen
 Mr. James Messersmith
 Ms. Mary Metzger
 Mr. Michael Miller
 Mr. and Mrs. William Miller
 Ms. Erika Neidhardt

Dr. and Mrs. Steven Nemcic
 Mr. and Mrs. Michael Nesterak
 Nickle Electrical Companies, Inc.
 Mr. Robert Palandrani
 Ms. Kristin Parsons
 Peninsula Fine Arts Center, Mr. Michael Preble
 Mr. and Mrs. Guy Pierce
 Mr. Lewis M. Purnell
 Mr. and Mrs. Mike Quinn
 Dr. and Mrs. Robert Radnich
 Mr. and Mrs. Hans Reigle
 Mr. and Mrs. Brian Richards
 Ms. Sandra M. Ridgely
 Mr. and Mrs. C. Donald Rittenhouse
 Ambassador and Mrs. Edward Rowell
 Mr. and Mrs. John Rudden
 Susan and Charles Salkin
 Mrs. Karol Schmiegel
 Mr. and Mrs. John R. Schoonover
 Mr. and Mrs. Steven Schwartz
 Ms. Amelie A. Sloan
 Ms. Christine Smolik
 SofterWare
 Ms. Sadie Somerville and Mr. Rodney Jester
 Ms. Karen Speakman
 Standard Distributing Company
 Dr. Steve Steckel and Dr. Stephanie Steckel
 Ms. Barbara B. Stephens

Dr. Joyce Hill Stoner
 Mr. and Mrs. Gerald Street
 Mr. Barry E. Barr and Mr. Jim Messersmith
 Mrs. Susan Terry
 Mr. and Mrs. Leonard S. Togman
 Mr. and Mrs. Sherman Townsend
 Ms. Karen Usselman and Mr. Jeffrey Booth
 Mr. Anthonie Verwijs
 Mr. and Mrs. Richard Warden
 Ms. Elizabeth Firestone Wehle
 Mr. and Mrs. Harry Willis
 Mr. and Mrs. Edward Wilson
 Hon. and Mrs. William Witham, Jr.
 Mr. and Mrs. J. Cameron Yorkston
 Mrs. Gabriel Jules Zepecki

*deceased

Fiscal Year End Financial Report (July 1, 2014- June 30, 2015)

Thank You!

fiscal year 2014-2015

Special thanks to the following grant funders who directly supported exhibition or educational programs at the Biggs Museum between July 1, 2014-June 30, 2015.

Delaware Division of the Arts
Delaware Humanities Forum
Donald and Martha DeWees Foundation
Edgar A. Thronson Foundation
Kent County Fund for the Arts
PNC Bank Foundation
The Virginia and Tom Gossage Foundation
Mid-Del Charitable Foundation
Nancy Carol Willis
Wilmington University
WSFS Bank
Martha and Willis Weldin



Pictured (left to right): Josh Twilley and Rosemary Twilley (Kent County Fund for the Arts), and Biggs Museum Executive Director Charles Guerin.

STATEMENT OF ACTIVITIES FOR YEAR END JUNE 30, 2015

(with Summarized Totals for year end 2015)*

	Unrestricted	Temporarily Restricted	Permanently Restricted	totals 2015	totals 2014
PUBLIC SUPPORT, GAINS & REVENUE:					
Contributions	352,812	—	—	352,812	347,036
Capital project	—	10,493	—	10,493	126,248
Exhibition	51,206	—	—	51,206	26,719
Grants	169,758	104,200	—	273,958	91,260
Schoonover Fund	—	6	—	6	3,582
DE Sampler	—	—	—	—	35,641
In-kind contribution	405,323	—	—	405,323	389,458
Investment income (net investment of \$38,770 and \$32,686 in 2015 and 2014, respectively)	5,222	—	55,747	60,969	60,969
Membership dues	23,620	—	—	23,620	24,505
Program fees	15,531	—	—	15,531	13,576
Products	6,748	—	—	6,748	4,802
Museum facility rental	5,814	—	—	5,814	3,368
Realized gain (loss)	—	—	305,534	305,534	462,662
Unrealized gain (loss) on investments	(7,123)	—	(218,517)	(225,640)	(12,364)
TOTAL	1,029,531	114,699	136,426	1,280,656	1,577,462
Special events	117,887	—	—	117,887	89,936
Less: Direct expenses	(51,012)	—	—	(51,012)	(57,248)
TOTAL	66,875	—	—	66,875	32,688
Net assets released from restriction: Satisfaction of program restrictions	350,803	(289,010)	(61,793)	—	—
TOTAL PUBLIC SUPPORT, GAINS AND REVENUE	1,447,209	(174,311)	74,633	1,347,531	1,610,150
EXPENSES:					
Program services	1,173,261	—	—	1,173,261	1,028,499
Support services:					
Management and general	138,614	—	—	138,614	116,599
Fund raising	34,474	—	—	34,474	28,927
Total Support Services	173,088	—	—	173,088	145,526
TOTAL EXPENSES	1,346,349	—	—	1,346,349	1,174,025
CHANGE IN NET ASSETS	100,860	(174,311)	74,633	1,347,531	1,610,150
NET ASSETS, BEGINNING OF YEAR	2,107,535	292,449	3,631,805	6,031,7894	5,595,664
NET ASSETS, END OF YEAR	\$2,208,395	\$118,138	\$3,706,438	\$6,032,971	\$6,031,789

*Full audit report available upon request.

STATEMENTS OF FINANCIAL POSITION

(June 30, 2015 and 2014)*

ASSETS	2015	2014
Current Assets:		
Cash and cash equivalents	614,975	\$943,000
Short-term Investments		
Accounts receivable	22,327	32,744
Pledges receivable	25,250	73,978
Prepaid expenses	3,207	3,644
Inventory	2,654	818
Total Current Assets	668,413	1,054,184
Noncurrent Assets:		
Noncurrent Pledges receivable	3,938,960	20,450
Noncurrent Investments	1,531,394	3,546,829
Equipment & Improvement (Net of accumulated depreciation of \$202,329 and \$155,105))		1,459,344
Total Noncurrent Assets	5,470,354	5,006,173
TOTAL ASSETS	\$ 6,138,767	\$6,060,357
LIABILITIES AND NET ASSETS		
Current Liabilities:		
Accounts payable	88,080	5,745
Accrued expenses	7,407	11,043
Deferred revenue	3,950	10,450
Payroll tax liabilities	6,359	1,330
Total Current Liabilities		28,568
Net Assets:		
Unrestricted	1,743,043	1,636,900
Unrestricted - board-reserve	465,352	470,635
Temporarily restricted - capital project	71,413	244,817
Temporarily restricted - DE Community Foundation endowment	11,718	11,973
Temporarily restricted - Schoonover Fund	12,910	12,904-
Temporarily restricted - endowment	10,837	22,755
Permanently restricted - endowment	3,706,438	3,631,805
Total Net Assets	6,032,871	6,031,789
TOTAL LIABILITIES AND NET ASSETS	\$6,138,767	\$6,060,357

*We have attempted to make this list accurate and complete; any omission or errors are regretted.
Please notify the museum at (302) 674-2111 with any corrections.

THE NEW BIGGS CAPITAL CAMPAIGN

The New Biggs Capital Campaign was completed in 2015. Thanks to the support of hundreds in the community, the museum was able to exceed its goal and raise \$2 Million throughout the course of the campaign. This list gives special recognition to those individuals and organizations who generously donated to name galleries throughout the capital campaign. For a complete list of capital campaign donors visit the Biggs Museum and view the updated donor recognition in the museum!

Named Galleries:

The Elisabeth S. and Richard E.
Poole Sculpture Atrium
The Richard and Virginia Appleby
American Glass Gallery
Child HELP Foundation Studio
Marcia and Henry DeWitt Federal
Gallery
Frank E. Schoonover Gallery of
American Illustration
Loockerman Bradford Family
American Baroque
The Choptank Foundation Gallery

Donors to the Permanent Collection

January - December 2015

Mr. Edward R. Burka
Ms. Diane L. Colgan
Mr. Carson Zullinger
Mr. and Mrs. Marvin Schoenhals
Chazz and Susan Salkin
The Estate of Richard E. Poole
Col. Kenneth P. and Regina I. Brown
Ms. Grace Hess
The Richard B. Taylor
& David A. Taylor Family

CONTACT & INFORMATION

THE BIGGS MUSEUM
406 Federal Street
Dover, DE 19901
Tel: (302) 674-2111
Fax: (302) 674-5133
admin@biggsmuseum.org
www.biggsmuseum.org

ADMISSION:

General Admission: \$10.00
Members: Free
Seniors(60+): \$8.00
Children 12 & under, and students: Free
Active military & family with ID: Free
First Sunday of every month: Free
Companions or care persons of people with
disabilities are free

Free Admission on select Downtown Dover Festival
Days (ie: Dover Days, 4th of July). For questions,
please call.



Exhibitions and programming are made possible, in part, by a grant from the Delaware Division of the Arts, a state agency dedicated to nurturing and supporting the arts in Delaware, in partnership with the National Endowment for the Arts.

Non-Profit Org.
U.S. Postage
PAID
Dover, DE
Permit #751

BIGGS MUSEUM GALA:

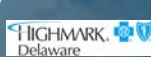
An Affair *with the* Arts

SATURDAY, MAY 14TH, 2016
from 6-11 P.M.

FOR TICKETS VISIT BIGGSMUSEUM.ORG
OR CALL 302-674-2111



Nage



Hon. and Mrs. Henry
duPont Ridgely



Kathy Dwyer Southern
and Hugh Southern



Edgar A. Thronson
Foundation

